



HD系列扶梯/人行道产品 HD ESCALATOR&MOVING WALK PRODUCTION

宁波宏大电梯有限公司

NINGBO HONGDA ELEVATOR CO.,LTD.

地址: 浙江省宁波市鄞州区东吴同心路1号

销售热线: 0574-88378555

传真: 0574-88489106

邮箱: hd@nxbd.com

网址: www.hosting-china.com

Address: Yinzhou District, Ningbo City, Zhejiang Province

Sales hotline: +86-574-88336262

Fax: +86-574-88336161

Email: inquiry@xindaworld.com

Web site//: www.hosting-china.com

本书为一般信息类出版物,我们保留随时更改产品设计和说明的权利。所有图片和颜色可能与实物有所不同,请以实物为准。宁波宏大电梯版权所有
This manual is an ordinary information publication. We reserve the right to change our product design and instructions at any time.
All the pictures and colors may be differ slightly from the reality. The reality shall prevail in this case.
Copyright: Ningbo Hongda Elevator Co., Ltd. all rights reserved



公司简介 Company profile

宁波宏大电梯有限公司是集研发、制造、安装维保于一体的电扶梯专业生产企业，是国家重点高新技术企业，“HOSTING”商标为中国驰名商标。

宏大电梯以中国工程院院士任顾问的省级技术中心研发团队为依托，具有雄厚的电梯节能技术研发能力和强大的自主创新能力，在电梯及主机节能和创新方面拥有领先优势以及一大批自主知识产权。

宏大电梯拥有总价5亿元国际一流的金切、钣金、喷涂等一大批国外进口成套先进装备及检测设施。

宏大扶梯已广泛进入国内外酒店、豪华购物中心以及轨道交通等重点工程，其中30%以上产品出口至南美、欧亚非等地，出口量名列全国第九位、在我国自主品牌出口名列前茅。

Ningbo Hongda Elevator Co., Ltd. specializes in research and development, manufacturing, installation and maintenance of elevators and escalators; it's the national key high-technology enterprise and its "HOSTING" brand is the famous trademark of China.

Hongda Elevator Co., Ltd, by relying on research and development team of its provincial enterprise technical center, whose advisors are members of Chinese Academy of Engineering; has strong ability in independent innovation and research & development of energy-saving technology, and owns leading advantage and many independent intellectual property rights in the field of energy-saving and innovation of elevator and elevator traction machine.

Hongda Elevator Co., Ltd. has imported first-class complete sets of equipment for metal cutting, sheet metal fabrication and coating and test equipment worth RMB500 million.

Hongda Escalator are widely applied in the key projects, such as hotels at home and abroad, luxury shopping centers, rail transit projects and etc. And more than 30% of our products are exported to South America, Europe, Asia and Africa etc; our export volume ranks ninth in China and first in self-owned brand of China.



上下从容 宏大电梯 YOU CAN GO UP AND DOWN EASILY RIDE IN HONGDA ELEVATOR

Comfortable

人性设计，舒适体验
Human-centered Design Let
You Feel Comfortable

以人为本
Human oriented
成就上下从容
Enabling you to live freely

我们本着以人为本的理念，将对细节的追求融入到每一个部件的设计与生产中。经过无数次的测试和实验，成就宏大扶梯安全、平稳的性能，以此为您带来舒适、自在的从容享受。

By observing the concept of human-oriented design, we include our efforts for excellence in detail into the design and manufacture of every part. Through numerous tests and experiments, we have finally created high-safety and high-stability performance of our escalators, and our products will let you feel very comfortable and enjoy your free life.

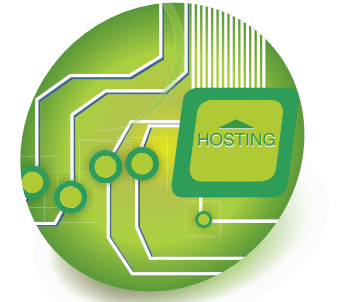
高性能的控制系统 High-performance control system

宏大扶梯全面提升扶梯的控制理念，采用模块化设计思路，使系统体积更小、集成化更高、运行更平稳。出色的数字化处理能力及运行效率最大限度的提升扶梯的节能效果。

扶梯控制系统内置完全的防雷击设计，控制器采用CPU+DSP冗余技术，充分保证系统的可靠性，系统完全符合EMC电磁兼容性标准。

Hongda Escalator upgrades control concept of escalators overallly. By applying modular designs, its control system is more compact and integrated, and runs more steadily. Outstanding digital processing capacity and operation efficiency can improve energy-saving effects of escalator to the greatest extent.

A complete lightning protection design is built in the escalator control system, with CPU+DSP redundant technology applied in its controller, which fully guarantees the system reliability. The control system completely complies with EMC (electromagnetic compatibility) standard.

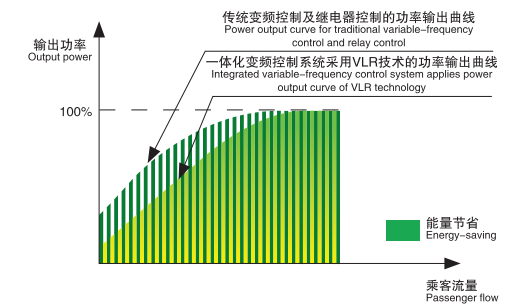
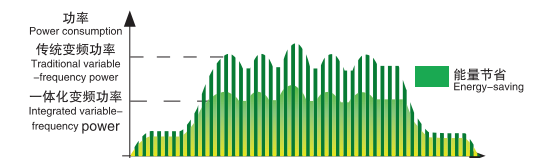


节能与能量再生技术 Energy-saving and energy regeneration technology

通过检测乘客流量并自动调节运行速度曲线，实现扶梯全程运行的有效节能；通过检测驱动器的直流母线电压并自动将系统的再生能量回馈到电网上，大大提高节能效果。

By detecting passengers flow and automatically adjusting the speed curve, Hongda Escalator can achieve effective energy saving in the whole process of its operation. By detecting DC busbar voltage of the driver and automatically feeding regenerated energy of the system back to the power grid, Hongda Escalator greatly improves its energy saving effects.

全程节能：VLR技术实现有效节能
Saving energy in the entire traveling process: VLR
technology realizes effective energy saving



便捷的远程监控系统 Convenient remote monitoring system

系统可以通过RS485等通讯接口，与客户监控系统进行连接，对扶梯的运行故障信息进行实时监控，极大的方便电梯的维修保养，适应现代智能化楼宇控制系统对扶梯的需求。

The system can be connected with customers monitoring system via RS485 port, in order to carry out real-time monitoring of escalator operation fault messages, which is very convenient to the escalator maintenance and suit to demands of modern intelligent building control system for escalators.

Energy Saving

节能理念，安全乘坐

With energy-saving design, passengers can ride safely

技术优势

Technical advantages

节能先锋

Creating new era of energy saving

我们始终将环保放在重要的战略位置，通过应用变频器与微机控制板两位一体的新型控制系统，为您节省更多空间，同时，驱动系统全面提升扶梯的传动效率，实现环保与高效的双赢。

We always put environmental protection at an important strategic position, and save more space for you by using a new type of control system integrating converter and microcomputer-based control board. Besides, the drive system upgrades driving efficiency of the escalator greatly and guarantees environmental protection and high efficiency.

多重安全保护 Multiple safety protection

安全装置遍布扶梯各个部件，控制系统具有重要器件检测及强大的故障诊断能力，全面提高扶梯安全性能。

Safety devices are provided at each component of the escalator. The control system has significant device testing and powerful fault diagnosis capability and improves safety performance of the escalators in an overall way.

舒适的乘梯感受 Comfortable ride feeling

扶梯专用变频驱动技术，采用新一代交流矢量控制调压调速技术，加减速自动调整中实现平滑过渡，运行更加平稳舒适。

By applying variable-frequency drive technology specially designed for the escalator and using new generation of AC vector controller-voltage regulator-speed governor technology, the escalators can achieve smooth and stable transition during automatic acceleration and deceleration adjustment and travels more stably, giving better comfort.

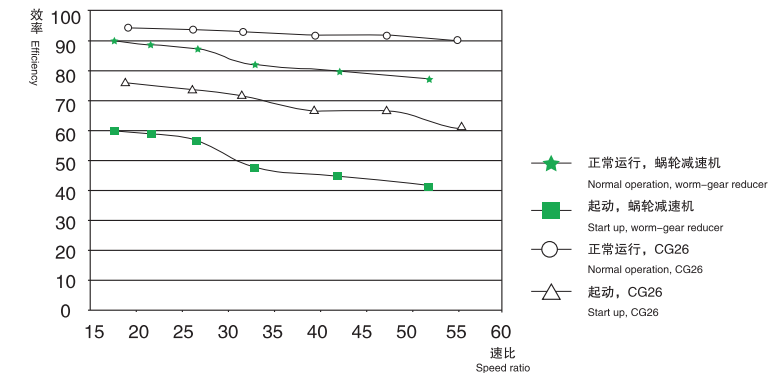
高性能驱动主机 High-performance traction machine

ET125/ET160自动扶梯减速机采用ZC齿形传动，具有力矩大、结构紧凑、噪音低、振动低、运行平稳等特点，噪音低于57dB，正常运行时传动效率高于88%，电机采用变频驱动，起动制停运行平稳，功率范围5.5~15kW。

ET125/ET160 escalator reducer adopts ZC toothed drive and has the features of high torque, small size, low noise, low vibration and steady operation. Its noise level is lower than 57dB, and its drive efficiency during normal operation is higher than 88%. The motor is variable-frequency drive motor and provides stable start-up, apply braking and stopping to the escalator smoothly, with power consumption of 5.5-15kW.

CG26蜗轮-斜齿轮减速机集中了蜗轮蜗杆传动和斜齿轮传动的优点，高速端蜗轮蜗杆传动，有低噪音、低振动、安全系数高等特点，低速端斜齿轮传动，这样保证整机传动效率高、节能等特点，整机传动效率可达92%以上，功率范围11~37kW。

CG26 worm gear-helical-gear reducer has the advantages of both worm gear-worm drive and helical-gear drive. The high-speed end is provided with worm gear-worm drive and has the characteristics of low noises, low vibration and high safety coefficient. The low-speed end is provided with helical-gear drive. This configuration guarantees high driving efficiency and energy saving characteristics of the entire traction machine. Driving efficiency of the traction machine is as high as more than 92% and power range is 11-37kW.



High Efficiency

科学结构，精密调试

Scientific structure, and precise commissioning

一体化结构

Integrated structure

安装调试更简捷

Installation and commissioning is easier and more convenient

我们相信，扶梯的功能性与操作的繁复性并不一定成正比，因此我们所设计的扶梯采用一体化结构，让组合装备更精密、高效，也让安装、调试更简便、快捷。

We believe that functions of an escalator are not necessarily proportional to the operation complexity. Therefore, escalators designed by us apply an integrated structure, so that the equipment is more precise and more efficient and allows easier and more convenient commissioning.

各部件标准配置和可选配置

Standard configuration and optional configuration of parts

配件名称 Parts	标准配置 Standard configuration	可选配置 Optional configuration
扶手壁板形式 Balustrade type	 不锈钢玻璃扶手 Transparent glass	 不锈钢斜扶手 Inclined stainless steel
乘降板 Landing board	 不锈钢系列 Stainless steel series	 铝合金系列 Aluminum series
梯级 Step	 不锈钢系列 Stainless steel series	 铝合金系列 Aluminum series
踏板 Pallets	 铝合金系列 Aluminum series	
扶手带颜色 Handrail color	 黑 Black	 棕 Brown 红 Red 绿 Green 蓝 Blue
曳引机 Traction machine	 蜗轮蜗杆传动 Worm gear drive	 蜗轮蜗杆斜齿轮传动 Worm helical gear drive

扶梯标准功能 Standard function

项 目 Item	功能名称 Function	说 明 Function description
1	驱动链保护 Driving chain safety device	驱动链条伸长或破断时使扶梯停止运行 Stop escalator if the driving chain is broken or excessively elongated
2	超速检测 Over speed detecting device	扶梯运行速度的检测装置，当超过允许值时停止扶梯运行 Detecting device of running speed,the escalator will stop when the running speed exceeds normal speed.
3	抱闸检测 Brake monitoring device	抱闸是否打开的检测装置 Detect if the brabe acts normally
4	裙板变形保护 Skirt panel safety device	梯级和裙板间夹杂异物时扶梯停止运行 Stop escalator if objects are caught between step and skirt panel
5	梯级轮保护 Step roller safety device	梯级轮变形或抬起时扶梯停止运行 Stop escalator if the step rollers are deformed or jacked
6	梯级塌陷保护 Step safety device	梯级破断时扶梯停止运行 Stop escalator when the steps are broken
7	梳齿保护 Comb plate safety device	梯级和梳齿间夹杂异物时扶梯停止运行 Stop escalator if objects are caught between comb plate and step
8	扶手带出入口保护 Handrail entry and exit safety device	扶手带出入口夹杂异物时扶梯停止运行 Stop escalator when objects are caught in the entry and exit of handrail
9	梯级链条保护 Step chain safety device	梯级链条伸长或破断时扶梯停止运行 Stop escalator if the step chain is broken or elongated
10	防逆转保护 Non-reversing safety device	扶梯逆转时扶梯停止运行 Stop escalator if its direction of travel is reversed
11	扶手带防静电保护 Handrail antistatic device	消除扶手带可能产生的静电 Prevent static electricity which is generated by handrail
12	电机过热保护 Motor overheat protection device	电机升温超过允许值时扶梯停止运行 Stop escalator if motor temperature is over the limit
13	梯级缺失检测 Step missing detecting device	梯级缺失时扶梯不能运行 Stop escalator if the step is missing
14	上下急停开关 Emergency stop switch	扶梯需紧急停止时使用的开关 The switch is used when the emergently stop is needed to the escalator
15	绿灯警示 Green caution light	给乘客进入扶梯时的警示灯 Take care of the passengers for riding safety
16	过载保护 (标准功能) Over load detection (Standard function)	电流超过断路器容量时扶梯停止运行 Stop escalator if current is over in MCCB
17	水位感应保护 (室外梯标准功能) Over flow sensor device (Outdoor standard function)	下部机房的积水超过允许高度时扶梯停止运行 Stop escalator if seepor is over default height in lower maintenance room

项 目 Item	功能名称 Function	说 明 Function description
18	断带检测 Handrail broken safety device	扶手带破断时使扶梯停止 Stop escalator if handrail breaks
19	扶手带速度检测 Handrail speed detector	扶手带运行速度的检测装置，当超过允许值时停止扶梯运行 (室内梯可选功能，室外梯标准功能) (optional function for indoor escalator, standard funtion for outdoor escalator)
20	裙板安全毛刷 Safety brush of skirt panel	防止梯级和裙板间夹杂异物的安全毛刷 Prevent little matter drop into the clearance between skirt panel and step

扶梯可选功能 Option function

项 目 Item	功能名称 Function	说 明 Function description
1	自动运行 Auto start	实现扶梯的自动运行和自动停止功能 Realize the function of auto running and auto stop
2	辅助制动 Auxillary brake	当扶梯由上行突然变为下行时使扶梯停止运行 Stop escalator when the running direction is changed suddenly
3	桁架加热器 Heating device for truss	环境温度低于0℃对扶梯桁架进行加热 When environment temperature is below 0, heating should be supplied for whole escalator truss
4	梳齿板加热器 Heating device for comb plate (outdoor standard function)	环境温度低于0℃对扶梯梳齿板进行加热 When environment temperature is below 0, heating should be supplied for comb plates

合理的布置、科学的规划 Logical positioning systematic layout

影响自动扶梯布置的因素

Factors influencing escalator arrangement:

建筑结构

Building structure

安装地点和客流方向

Installation site and direction of traffic flow

客流量强度

Traffic volume intensity

使用场合（商业区域，公共交通）

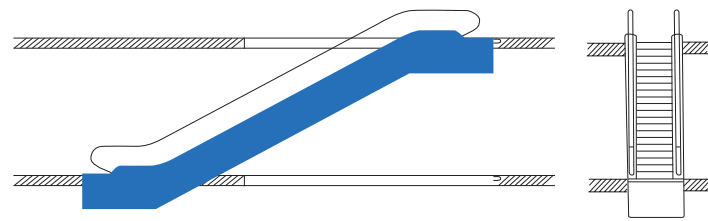
Area of application (commercial sector public transport)

客户特殊需要

The customers special requirements

可行布置方案：

The following arrangements are possible:

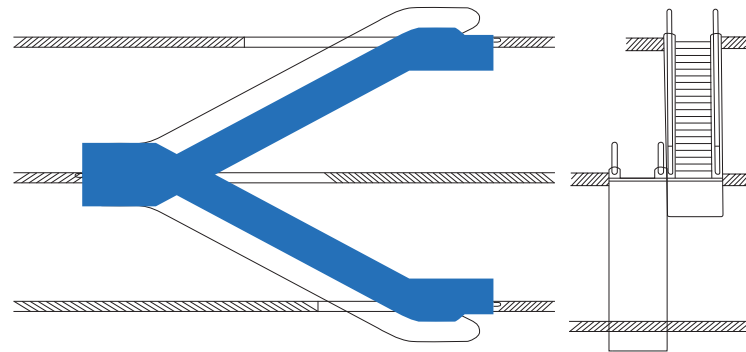


单台扶梯

Single unit

采用单台扶梯连接两个层面，它适合客流量主要朝一个方向流动的大楼，可作灵活的调整以满足乘客流动的需要（例如：早晨上行，晚上不行）

The single unit is used to link two levels. it is suitable for buildings with passenger traffic flowing mainly in one direction. Flexible adjustment to traffic flow (e.g., up in the morning and down in the evening) is possible.

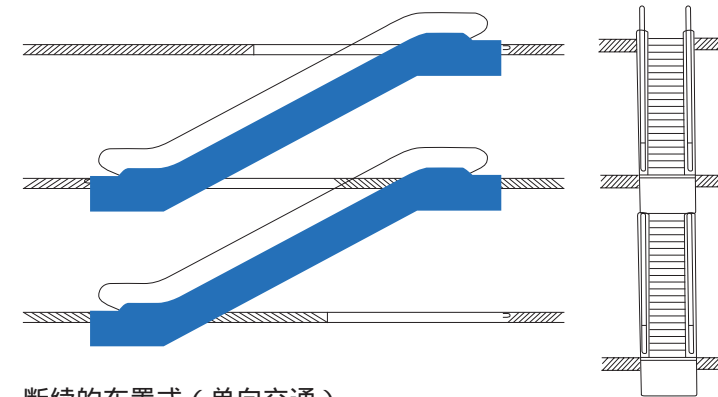


连续布置式（单向交通）

Continuous arrangement (one-way traffic)

这种布置方式主要用于小型百货商店，以连续三个销售楼层。这种布置比断续布置所需要的空间要多一些。

This arrangement is used mainly in smaller department stores to link three sales levels. It requires more space than the interrupted arrangement.

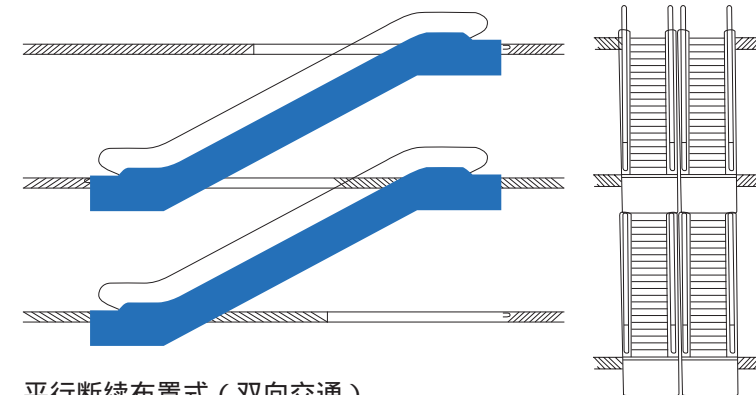


断续的布置式（单向交通）

Interrupted arrangement (one-way traffic)

这种布置多少会给乘客带来不便，但对商场业主有利，因为在上行或下行扶梯间以及换乘扶梯间的空间间隔有可能让顾客看到特意布置的广告展品。

This arrangement is somewhat inconvenient for users, but advantageous for department store owners, since the short detour to the next unit and the spatial separation between up and down travel is ideal for leading customers past strategically placed advertising displays.

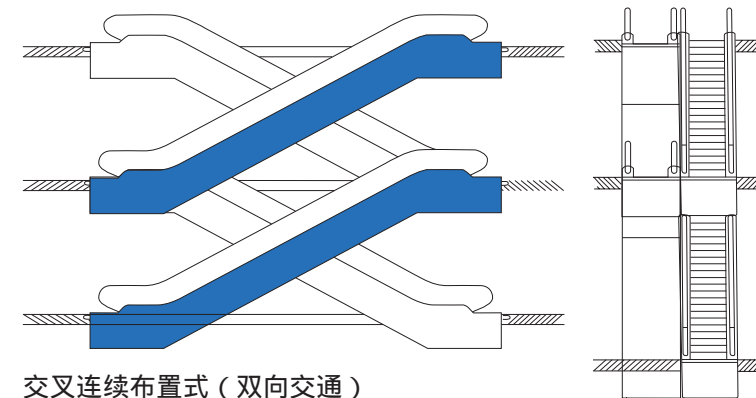


平行断续布置式（双向交通）

Parallel, interrupted arrangement (two-way traffic)

这种布置方式主要用于客流量较大的商场和公交设施，当有三台或三台以上自动扶梯时，就应有可能按照客流改变运动方向，这种布置方式比较经济，因为这样无需内侧挡板。

This arrangement is used mainly in department stores and public transport buildings with a heavy traffic volume. when there are three or more escalators, it should be possible to reverse the traveling direction according to the traffic flow, this arrangement is economical, since no inner lateral claddings are required.



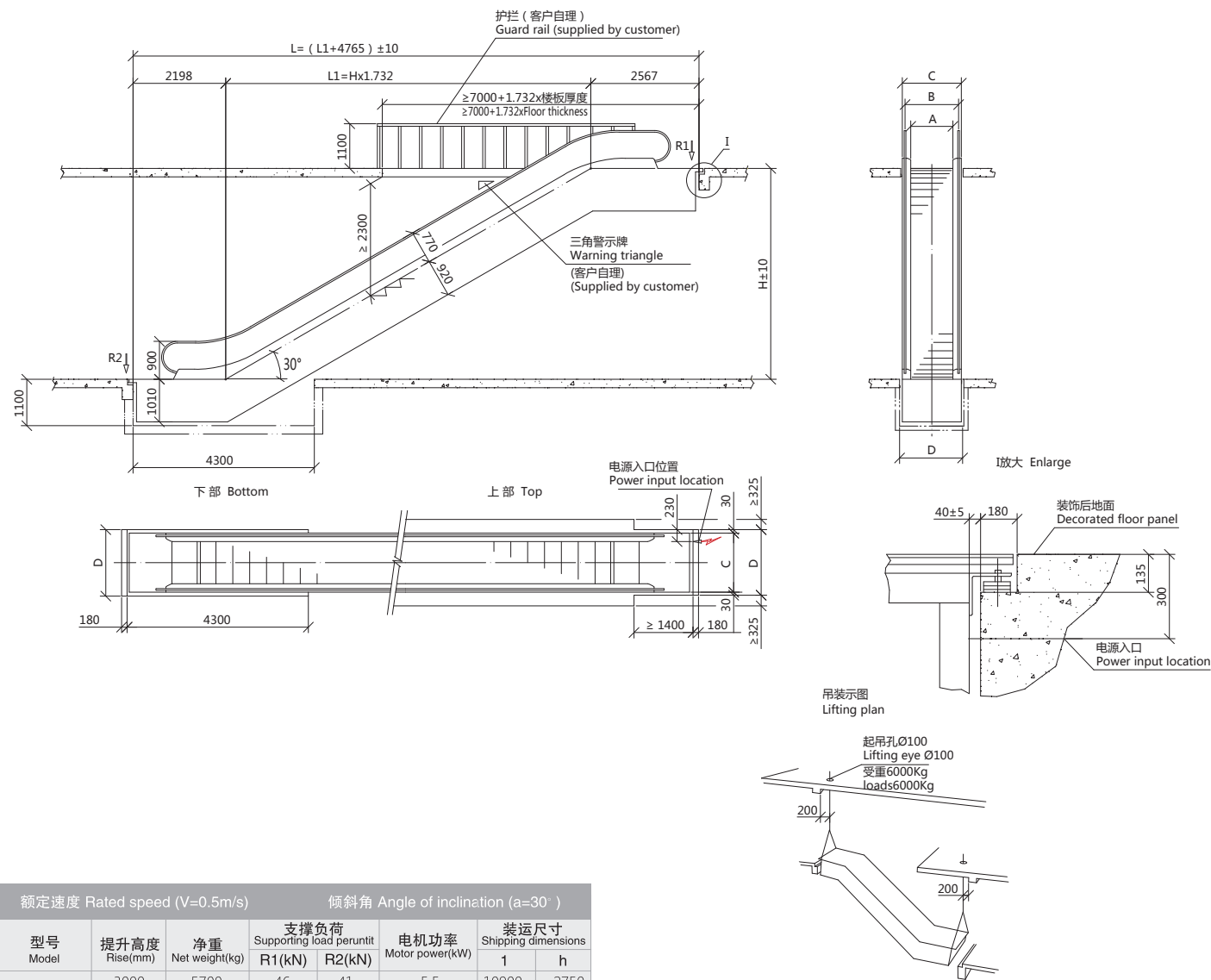
交叉连续布置式（双向交通）

Crisscross, continuous arrangement (two-way traffic)

这种布置方式主要用于大型百货商场、公共建筑和公共交通场所，这些地方的楼层之间的运送次数应保持尽可能地少。

This arrangement is used mainly in major department stores, public buildings and public transport buildings where transport times between several levels should be kept to a minimum.

HD-1200系列 商务型 Commercial Escalator
HDB-30-2



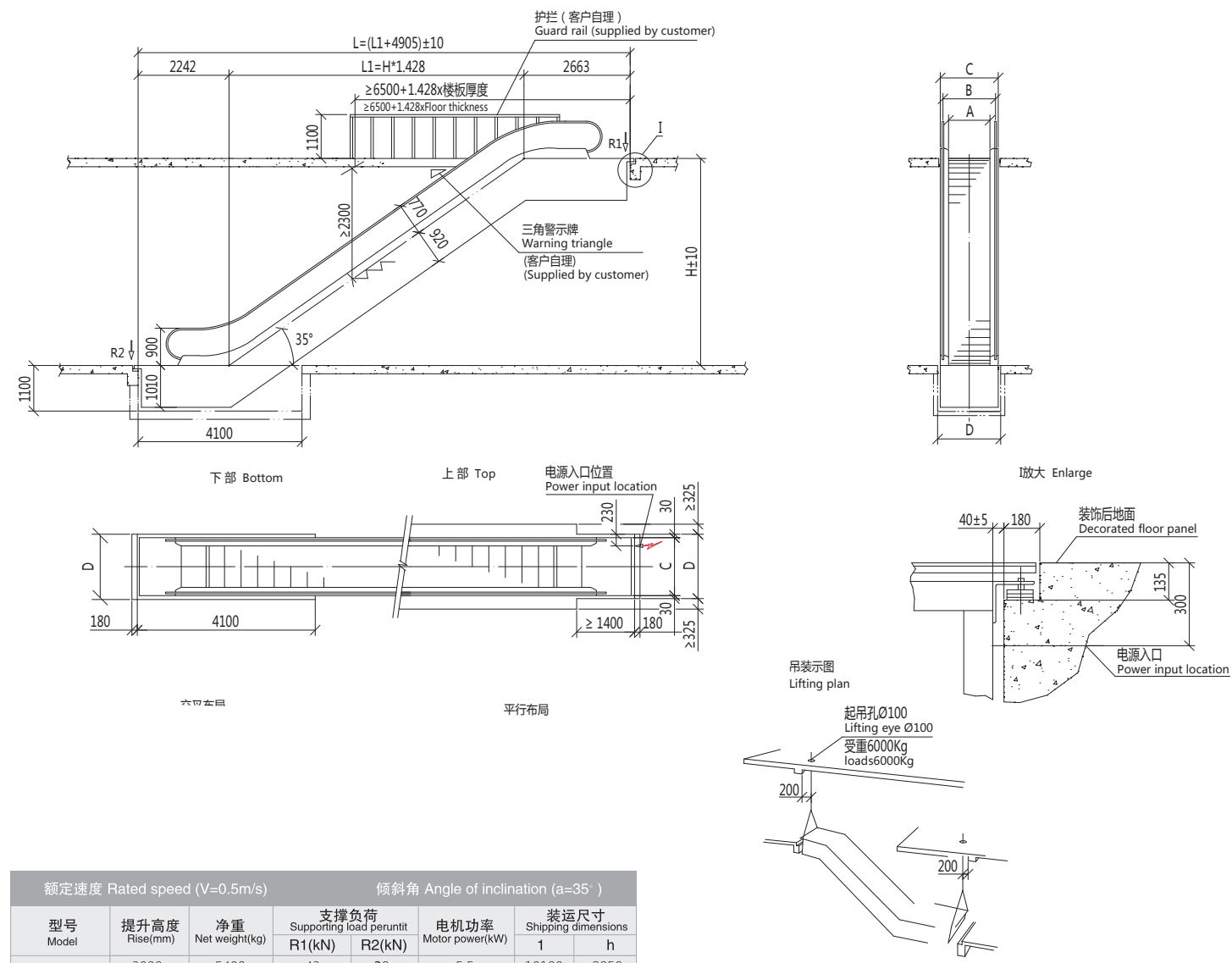
型号 Model	提升高度 Rise(mm)	净重 Net weight(kg)	支撑负荷 Supporting load per unit		电机功率 Motor power(kW)	装运尺寸 Shipping dimensions	
			R1 (kN)	R2 (kN)		1	h
HD-1200-30-60 4500人/小时 (4500p/h)	3000	5700	46	41	5.5	10900	2750
	3500	6000	49	44	5.5	11800	2780
	4000	6400	52	47	5.5	12800	2810
	4500	6800	56	50	5.5	13870	2830
	5000	7100	59	53	5.5	14860	2840
	5500	7500	62	56	5.5	15860	2860
HD-1200-30-80 6750人/小时 (6750p/h)	3000	5900	52	47	5.5	10900	2750
	3500	6300	56	50	5.5	11800	2780
	4000	6700	62	54	5.5	12800	2810
	4500	7100	64	57	5.5	13870	2830
	5000	7400	68	60	7.5	14860	2840
	5500	8200	74	66	7.5	15860	2860
HD-1200-30-100 9000人/小时 (9000p/h)	3000	6300	59	53	5.5	10900	2750
	3500	6700	64	57	5.5	11800	2780
	4000	7100	68	61	7.5	12800	2810
	4500	7500	73	65	7.5	13870	2830
	5000	8300	79	71	7.5	14860	2840
	5500	8700	84	75	11	15860	2860
6000	9200	88	79	11	16850	2870	

注：1. 当梯级宽度为600mm时，扶梯上水平段增加500mm
2. 此扶梯最大设计高度为6米

Remarks:
1. When the step width is 600mm, the up horizontal section of the escalator will be increased by 500mm
2. The maximum designed height of the escalator is 6 meters

基本尺寸 Basic dimensions	型号 Model	HD-1200-30-60	HD-1200-30-80	HD-1200-30-100
A梯级宽 (A Step width)		600	800	1000
B扶手带中心距 (B Central distance of handrail)		838	1038	1238
C扶梯外侧宽 (C Exterior width of the escalator)		1200	1400	1600
D底坑最小宽度 (D Min. width of pit)		1260	1460	1660

HD-1200系列 商务型 Commercial Escalator
HDB-35-2



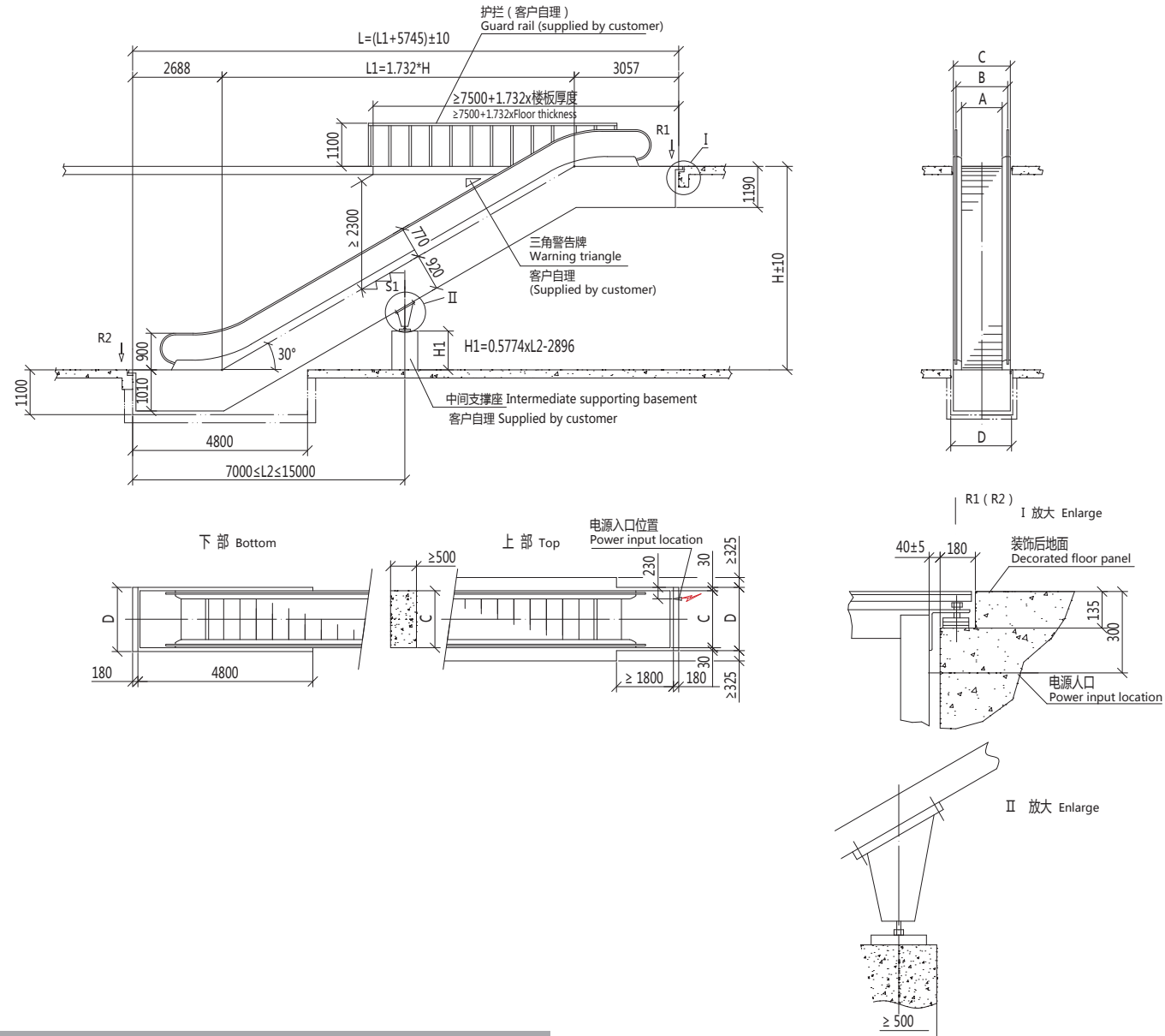
型号 Model	提升高度 Rise(mm)	净重 Net weight(kg)	支撑负荷 Supporting load per unit		电机功率 Motor power(kW)	装运尺寸 Shipping dimensions	
			R1 (kN)	R2 (kN)		1	h
HD-1200-35-60 4500人/小时 (4500p/h)	3000	5400	43	39	5.5	10180	2850
	3500	5700	46	41	5.5	11030	2890
	4000	6000	49	44	5.5	11890	2920
	4500	6400	52	46	5.5	12750	2940
	5000	6700	54	49	5.5	13610	2970
	5500	7000	57	51	5.5	14470	2980
HD-1200-35-80 6750人/小时 (6750p/h)	3000	5600	49	44	5.5	10180	2850
	3500	6000	52	47	5.5	11030	2890
	4000	6300	56	50	5.5	11890	2920
	4500	6600	59	53	5.5	12750	2940
	5000	7000	62	56	7.5	13610	2970
	5500	7300	65	59	7.5	14470	2980
HD-1200-35-100 9000人/小时 (9000p/h)	3000	6000	56	50	5.5	10180	2850
	3500	6400	60	53	5.5	11030	2890
	4000	6700	64	57	7.5	11890	2920
	4500	7100	67	60	7.5	12750	2940
	5000	7400	71	64	7.5	13610	2970
	5500	8200	77	69	11	14470	2980
6000	8500	81	72	11	15330	3000	

注：1. 当梯级宽度为600mm时，扶梯上水平段增加500mm
2. 此扶梯最大设计高度为6米

Remarks:
1. When the step width is 600mm, the up horizontal section of the escalator will be increased by 500mm
2. The maximum designed height of the escalator is 6 meters

基本尺寸 Basic dimensions	型号 Model	HD-1200-35-60	HD-1200-35-80	HD-1200-35-100
A梯级宽 (A Step width)		600	800	1000
B扶手带中心距 (B Central distance of handrail)		838	1038	1238
C扶梯外侧宽 (C Exterior width of the escalator)		1200	1400	1600
D底坑最小宽度 (D Min. width of pit)		1260	1460	1660

HD-1200系列 商务型 Commercial Escalator
HDB-30-3



型号 Model	提升高度 Rise (mm)	净重 Net weight (kg)	支撑负荷 Supporting load per unit			电机功率 Motor power (kW)
			R1 (kN)	R2 (kN)	S1 (kN)	
HD-1200-30-60 4500人/小时 (4500p/h)	5500	7000	62	56		7.5
	6000	7500	65	59		7.5
	6500	8000	64	56	85	7.5
	7000	8500	69	61	90	7.5
	7500	9000	74	66	95	7.5
HD-1200-30-80 6750人/小时 (6750p/h)	5500	7800	70	64		7.5
	6000	8300	75	69		7.5
	6500	8500	69	61	90	7.5
	7000	9000	74	66	95	11
HD-1200-30-100 9000人/小时 (9000p/h)	5500	8700	82	74		11
	6000	9200	85	79		11
	6500	9700	74	66	100	11
	7000	10200	79	71	105	15
	7500	10700	84	76	110	7.5*2

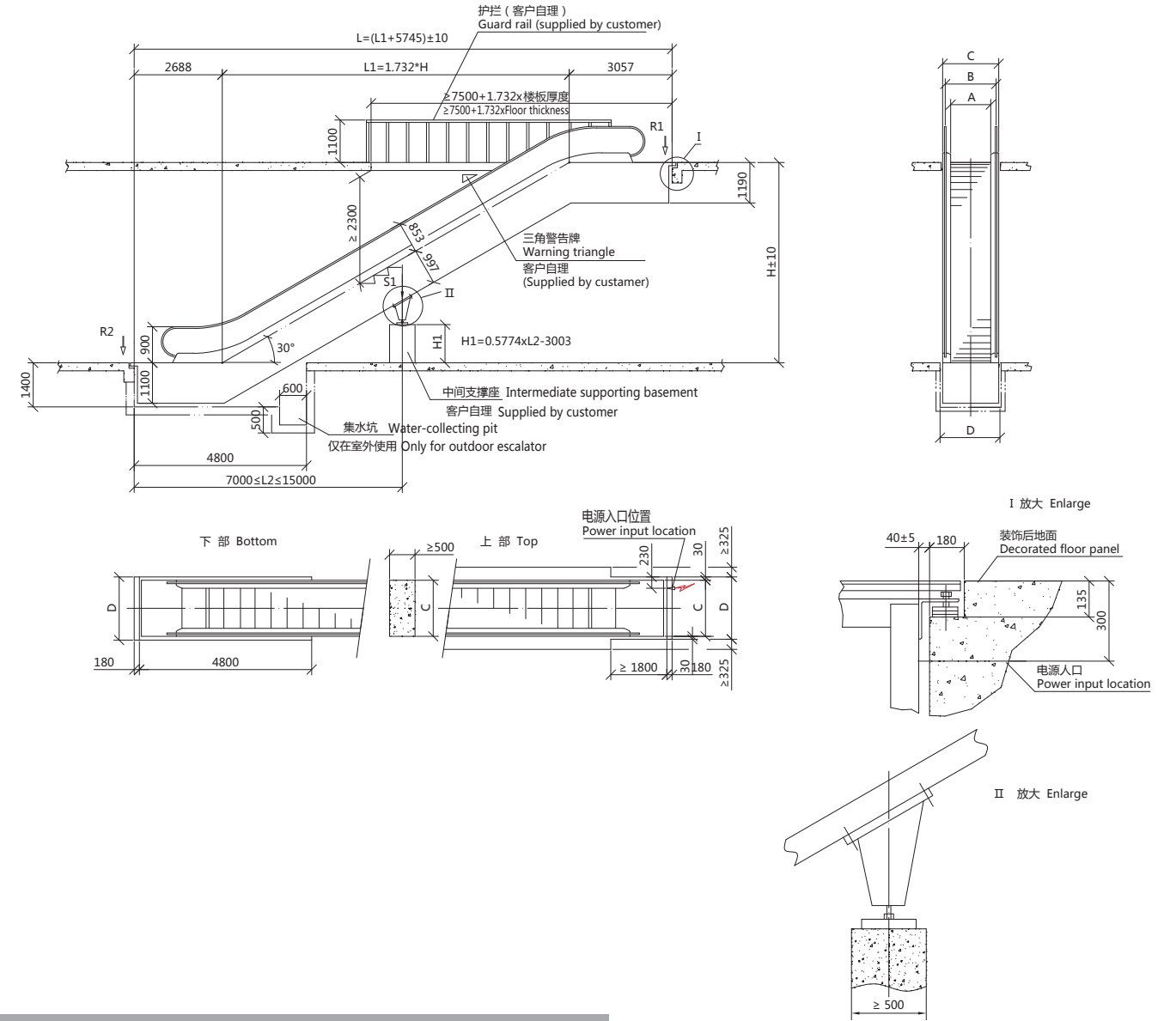
注：1. 当梯级宽度为600mm时，扶梯上水平段增加500mm
2. 当扶梯为双驱动时，扶梯上水平段增加500mm
3. 此扶梯最大设计高度为7.5米

Remarks:

- When the step width is 600mm, the up horizontal section of the escalator will be increased by 500mm
- When the escalator is double-drive, the up horizontal section of the escalator will be increased by 500mm
- The maximum height of the escalator is 7.5 meters

基本尺寸 Basic dimensions	型号 Model	HD-1200-30-60	HD-1200-30-80	HD-1200-30-100
A梯级宽 (A Step width)		600	800	1000
B扶手带中心距 (B Central distance of handrail)		838	1038	1238
C扶梯外侧宽 (C Exterior width of the escalator)		1200	1400	1600
D底坑最小宽度 (D Min. width of pit)		1260	1460	1660

HD-1200系列 公共交通型 Public Transport Escalator
HDG-30



型号 Model	提升高度 Rise (mm)	净重 Net weight (kg)	支撑负荷 Supporting load per unit			电机功率 Motor power (kW)	
			R1 (kN)	R2 (kN)	S1 (kN)		
HD-1200-30-80 6750人/小时 (6750p/h)	6500	9000	84	76	105	11	
	7000	9500	87	80	110	11	
	7500	10000	91	84	115	11	
	8000	10500	95	87	122	11	
	8500	11000	99	90	130	11	
	9000	11500	113	93	142	11	
	9500	12000	117	97	152	7.5*2	
	10000	12500	121	100	164	7.5*2	
	HD-1200-30-100 9000人/小时 (9000p/h)	6500	10000	88	76	109	11
		7000	10500	91	79	115	7.5*2
7500		11000	94	86	120	7.5*2	
8000		11500	98	89	125	7.5*2	
8500		12000	104	94	132	7.5*2	
9000		12500	120	97	145	7.5*2	
	9500	13000	126	102	157	7.5*2	
	10000	13500	132	110	169	11*2	

注：1. 当扶梯双驱动时，扶梯上水平段增加500mm
2. 此扶梯最大设计高度为12米

Remarks:

- When the escalator is double-drive, the up horizontal section of the escalator will be increased by 500mm
- The maximum height of the escalator is 12 meters

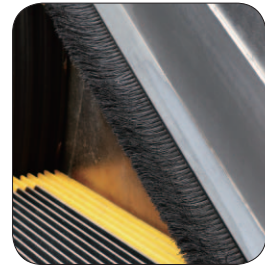
基本尺寸 Basic dimensions	型号 Model	HD-1200-30-80	HD-1200-30-100
A梯级宽 (A Step width)		800	1000
B扶手带中心距 (B Central distance of handrail)		1038	1238
C扶梯外侧宽 (C Exterior width of the escalator)		1400	1600
D底坑最小宽度 (D Min. width of pit)		1460	1660

最新一代的扶梯可具备故障诊断及远程通讯功能

The latest generation escalator has the function of fault diagnosis and remote communication

依据丰富的实践经验设计数字化扶梯

Design the digital escalator based on the vast practice experience



围裙毛刷
Skirt brush



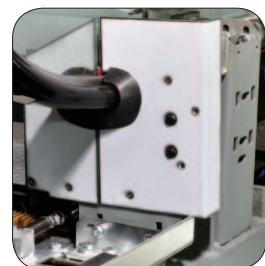
围裙保护装置
Skirt guard safety device



梳齿保护
Comb plate safety device



急停按钮
Emergency stop device



扶手带出入口保护装置
Handrail entry and exit guard



速度监控装置
Speed detector



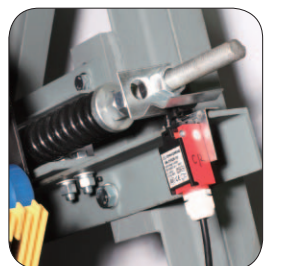
驱动链松链断链检测装置
Driving chain safety device



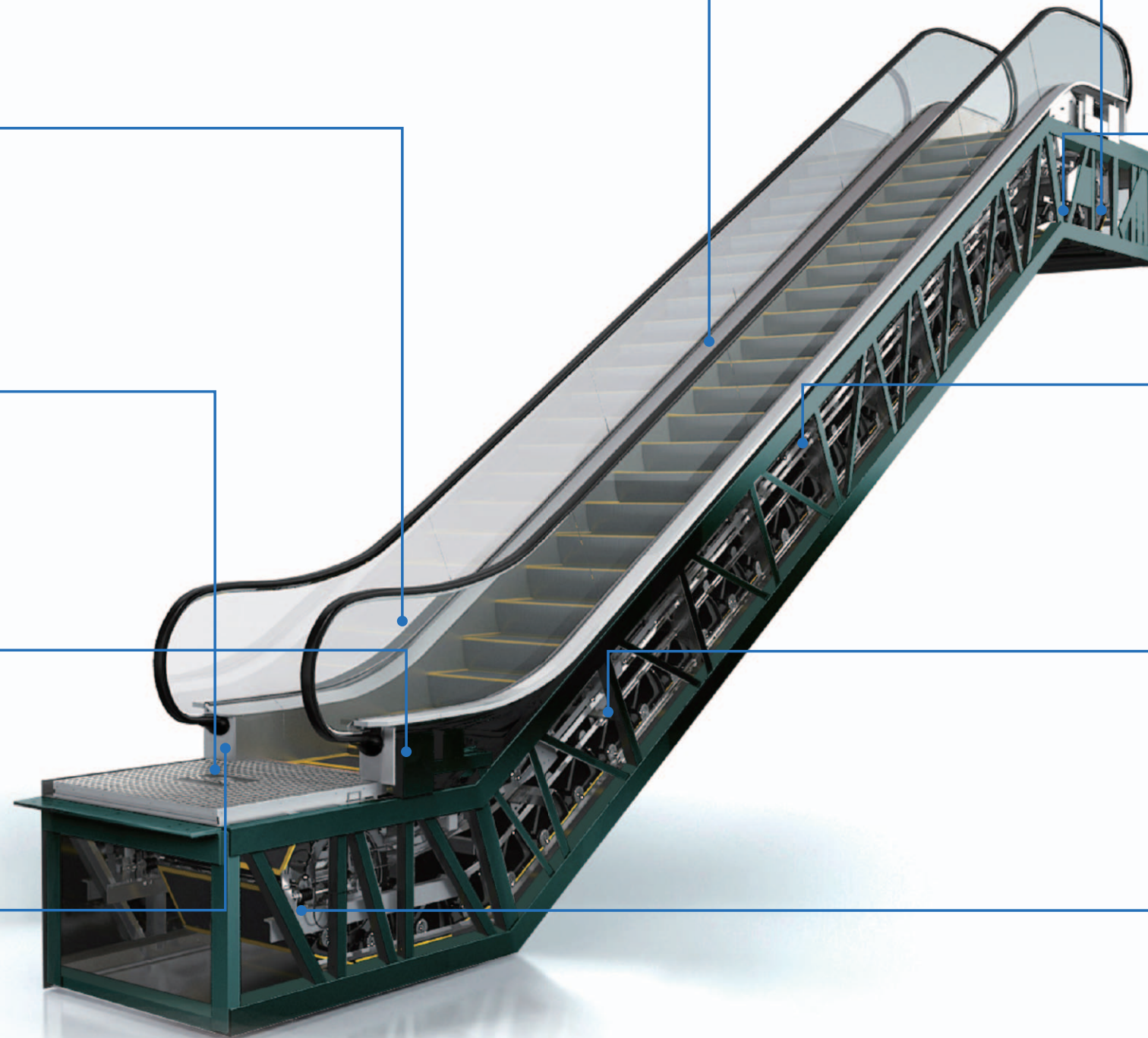
梯级塌陷检测装置
Step safety detecting device



扶梯导静电装置
Handrail anti-static device



梯级链断裂和伸长检测装置
Step chain safety device

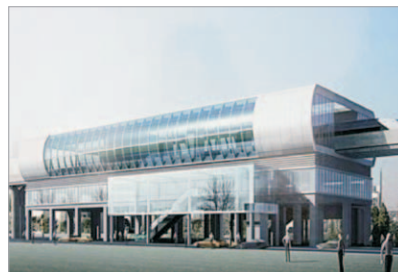




我们热切地欢迎加入我们的队伍
We're looking forward to your joining our global partnership here soon.



国内项目 DOMESTIC PROJECTS



宁波轨道交通
Ningbo Subway



宁波BEST广场
Ningbo BEST Square



嘉兴中港城
Jiaxing Zhong Gang City



天一国美电器
Tianyi Gome



现代商城
Modern Shopping Mall



招宝广场
Zhaobao Square



乐天数码城
Lotte Digital City



天伦广场
Tianlun Plaza



宜昌康来特商城
Yichang Colette Shopping Mall

海外项目 OVERSEAS PROJECTS



巴拿马购物中心
Shopping Mall In Panama



哥伦比亚购物中心
Shopping Mall In Columbia



印尼雅加达娱乐中心
Entertainment Center In Indonesia Jakarta



哥斯达黎加购物中心
Shopping Mall In Costa Rica



罗马尼亚娱乐中心
Entertainment Center In Romania



委内瑞拉娱乐中心
Entertainment Center In Venezuela



伊朗购物中心
Shopping Mall In Iran



南非购物中心
Shopping Mall In South Africa